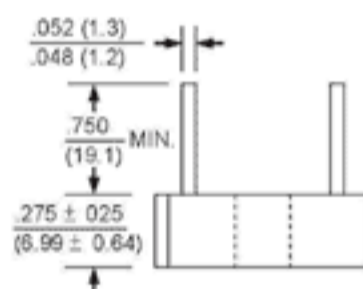
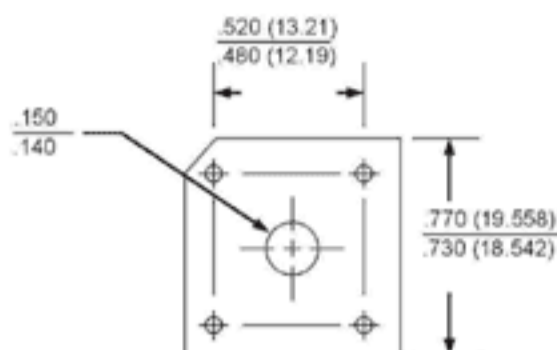


## SILICON BRIDGE RECTIFIERS

REVERSE VOLTAGE - 50 to 1000 Volts  
 FORWARD CURRENT - 8.0 Amperes

### FEATURES

- Surge overload rating - 170 amperes peak
- Low forward voltage drop
- Small size; simple installation
- Silver Plated Copper Leads
- Mounting Position: Any



Polarity shown on side of case:  
 positive lead by beveled corner.

Dimensions in inches and (millimeters)

### MAXIMUM RATINGS AND ELECTRICAL CHARACTERISTICS

Rating at 25°C ambient temperature unless otherwise specified.  
 Single phase, half wave, 60Hz, resistive or inductive load.  
 For capacitive load, derate current by 20%

CHARACTERISTICS	BR805	BR81	BR82	BR84	BR86	BR88	BR810	UNIT
	KBPC 8005	KBPC 801	KBPC 802	KBPC 804	KBPC 806	KBPC 808	KBPC 810	
Maximum Recurrent Peak Reverse Voltage	50	100	200	400	600	800	1000	V
Maximum RMS Bridge Input Voltage	35	70	140	280	420	560	700	V
Maximum Average Forward Rectified Output Current at $T_C=100^{\circ}\text{C}$ (Note 1) $T_A=40^{\circ}\text{C}$ (Note 2)							8.0 3.0	A
Peak Forward Surge Current, 8.3ms single half sine-wave super imposed on rated load							170	A
Maximum Forward Voltage Drop per Bridge Element at 4.0A Peak							1.0	V
Maximum Reverse Current at Rated DC Blocking Voltage per Element $T_A=25^{\circ}\text{C}$ $T_A=100^{\circ}\text{C}$							10.0 1.0	$\mu\text{A}$ mA
Operating Temperature Range $T_C$							-40 to +125	°C
Storage Temperature Range $T_A$							-40 to +125	°C

NOTES: 1. Unit mounted on metal chassis  
 2. Unit mounted on P.C. board